



Knives



Sail knife with plastic grip, made of stainless steel

Hand-grip coated with colored plastic, fitted with fid and shackle opener.

Code	Handle colour	Blade mm	Length when closed mm	Length when open mm	Weight g
10.285.11	Yellow	65	100	155	118
10.285.12	Orange	65	100	155	118
10.285.13	Blue	65	100	155	118



Sail knife made of stainless steel

Supplied with blade, fid, folding shackle key and screwdriver, high quality finish.

Code	Handle colour	Blade mm	Length when closed mm	Length when open mm	Weight g
10.285.10	Mirror-polished SS	65	100	150	102



High quality knife made of stainless steel

Equipped with shackle key, fid, bottle opener, screwdriver, hook disgorger; it comes in a blister package.

Code	Handle colour	Blade mm	Length when closed mm	Length when open mm	Weight g
10.285.05	Mirror-polished steel	70	100	155	142



Knife + spike in leather cover

Stainless steel knife, spike and shackle key, very practical and sturdy leather cover with belt hook.

Code	Handle colour	Blade mm	Length when closed mm	Length when open mm	Weight g
10.285.20	Wood	131	240	230	220

Splicing accessories

Marlow



MARLOW professional kit for line splicing

Code	Description
10.291.00	It includes: marlinespike, 2 x steel needles (1 x 25-cm long and 1 x 50-cm long), whipping twine, finish tape, illustrated instructions.




Feeder kit for line splicing (for ropes with core and sheath)

Code	Description
10.292.00	5 Feeders for 4- to 20-mm long lines. Aluminium construction - except 4/6 made of stainless steel. It comes in its case.

MARLOW whipping twine

Suitable for sewing sails and splicing lines, **plastic** spools. Made of waxed polyester

Code	Colour	Thread	Spools m	Ø mm	 ORDER BY BOX
10.207.02	<input type="checkbox"/> White	Thin	92	0,5	12 pcs
10.207.04	<input type="checkbox"/> White	Medium	41	0,8	12 pcs
10.207.08	<input type="checkbox"/> White	Thick	23	1,1	12 pcs
10.207.14	<input checked="" type="checkbox"/> Red	Medium	41	0,8	12 pcs
10.207.24	<input checked="" type="checkbox"/> Blue	Medium	41	0,8	12 pcs
10.207.34	<input checked="" type="checkbox"/> Black	Medium	41	0,8	12 pcs

Marlow



Sail repair kit

10.290.00 Includes:

- 2 polyester thread reels - 1 paraffin wax tablet - a pair of scissors
- 5 needles - 2,5 meters of Dacron self-adhesive tape 10.288.00
- 1 sail-maker's palm - 1 square-piece of Dacron fabric
- 1 splicing fid 10.285.70 - 1 puncher.

All items provided in a plastic jar.



Sail needles



Package of assorted needles. Ideal to repair and reinforce the sails.

Code	Description
10.286.00	A series of 5 different sail needles.

Polyester thread



Special high strength thread suitable for sewing sails.

Code	Colour	 m
10.287.01	<input type="checkbox"/> white	30

Fids

Made of **stainless steel** with handle, suitable for splicing

Code	Version
10.285.70	Small
10.285.71	Large (for lines over 11/12 mm)



Palm guard

Made of **leather** with reinforced metal, suitable for sewing or splicing.

Code	Version
10.285.80DX	right
10.285.80SX	left



Kit to cover steering wheels with leather

Pre-punched leather cover kit for steering wheels, 120-cm max diameter and 22-mm tube. Display blister containing what's necessary to cover steering wheels with leather. You can choose the smooth or suede side to be sewn.

The kit contains:

- 2 x strips of pre-punched leather with already made wheel central seam.
- 2 x reels of Marlow thread.
- 2 needles.
- 1 punch.

Code	Colour
65.527.01	<input checked="" type="checkbox"/> Polished or suede brown
65.527.02	<input type="checkbox"/> Polished or suede ice white



▲ 65.527.01



▲ 65.527.01



D-SPLICER splicing tools

D-SPLICER



D-SPLICER set of 4 needles

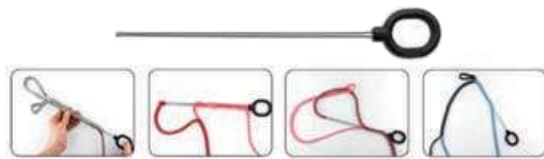
Code	Description
10.301.00	The splicing set includes 4 needles of different size: N. 2 x Ø 1 mm x 24 cm suitable for $\lt; \text{Ø } 2 \text{ mm}$ line splicing, N. 2 x Ø 1,5 mm x 26 cm suitable for Ø 2-4 mm line splicing.



D-SPLICER line splicing kit

Splicing kit for lines up to 16 mm. It comes in carrying bag.

Code	Description
10.300.00	Line splicing kit including: 1 x F15 needle, 1 x D-24 ceramic knife, 1 x 66-m of adhesive tape, 6 x needles of different size,



▲ When using the needles in the right manner one can extend their lifespan

D-SPLICER needle

With fixed handle for easy use.

Code	Initials	Ø-needle mm	For Ø-lines mm
10.302.10	F10	1	0 - 2
10.302.15	F15	1,5	2 - 4
10.302.20	F20	2	4 - 6
10.302.25	F25	2,5	6 - 8



▲ YES! Clamp only the tip of the rope



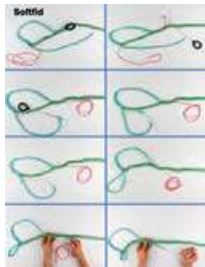
▲ NO! Do not double the rope



▲ YES! Taper thicker ropes OR take a larger D-SPLICER needle



▲ NO! Too thick!



D-SPLICER splicing handbook

Handbook with detailed instructions for good and long-lasting splicing.

Code	Language
10.306.01	Italian
10.306.02	English



D-SPLICER ceramic knife

This knife remains sharp and cuts super fibers like Dyneema, Spectra & Vectran with ease. It comes in a protective cover.

Code	Initials	For
10.306.24	D-24	Ø-lines up to 20 mm



D-SPLICER scissors

Designed for cutting super fibres like Dyneema, Vectran, Stirotext.

Code	Initials	For
10.307.16	C-16	Ø-lines up to 8 mm



D-SPLICER tape

Strong, thin and smooth for perfect application.

Code	Length
10.308.00	66 m

Repairs ribbons



PSP Stayput self-adhesive tapes for repairs

Adhesive tape "Dacron SPI" for repairing sails in a matter of seconds.
Ideal for spinnakers, designed to reinforce the battens.

Code	Colour	Roll	Code	Colour	Roll
10.288.00AR	Orange	50 mm x 4,5 m	10.288.00BL	Blue	50 mm x 4,5 m
10.288.00AZ	Light blue	50 mm x 4,5 m	10.288.00GI	Yellow	50 mm x 4,5 m
10.288.00BI	White	50 mm x 4,5 m	10.288.00NE	Black	50 mm x 4,5 m
10.288.00RO	Red	50 mm x 4,5 m	10.288.00BS	Dark blue	50 mm x 4,5 m
10.288.00VE	Green	50 mm x 4,5 m	10.288.00CA	Charcoal-grey	50 mm x 4,5 m



PSP Heavy Duty Stayput self-adhesive tapes for repairs

Adhesive tape for sail repairs in a matter of seconds.
Higher strength version for sailing boats over 10 metres.

Code	Color	Roll
10.289.00	white	50 mm x 2 m
10.289.01	white	100 mm x 2 m



PSP Mylar self-adhesive tapes for repairs

Special clear adhesive tape suitable for repairing sails in a matter of seconds;
Mylar is also suitable for Dracon sails and sails with other type of fabrics.
Moreover, it can be used to repair clear windows on sail boards or surf boards.

Code	Colour	Roll
10.387.00	transparent	50 mm x 3 m
10.388.00	transparent	150 mm x 3 m



PSP Dacron Insigna self-adhesive tape for repairs

High strength self-adhesive tape, suitable for repairing part of sails that are subjected to considerable strains.

Code	Color	Roll
10.288.40	white	75 mm x 1,5 m
10.288.41	black	75 mm x 1,5 m
10.288.42	red	75 mm x 1,5 m
10.288.43	blue	75 mm x 1,5 m



PSP Kite Tape, self-adhesive

Tear-proof self-adhesive tape ideal to repair kite or sheet sails.
Apply on the tear so that it doesn't open further.

Code	Color	Roll
10.288.10BI	white	150 mm x 2,5 m



PSP Dacron Wave Leech Tape, self-adhesive

Decron^r self-adhesive tape designed to reinforce worn up sails (i.e. the mainsail leech) in leeward areas avoiding shaking and preserving their performance.

Code	Colour	Roll
10.288.20BI	White	75 mm x 3 m



PSP Kevlar self-adhesive tape

Ideal to repair racing sails.

Code	Colour	Description	Roll
10.487.00	Gold	Suitable to repair sails made from the same fabric. High strength. It can also be used on polyester or Mylar sails	75 mm x 1,5 m





PSP Repair Patch self-adhesive tape

Two self-adhesive rectangular tapes, size 24 x 37 cm each; suitable for repairing large tears; to be applied on both sides of the sail.

Code	Material	Colour
10.385.00BI	DACRON	White
10.385.00BL	DACRON	Blue

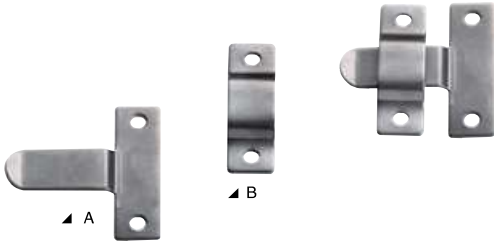


PSP Mast Collar self-amalgamating tape for mast foot

Self-amalgamating tape for sealing the mast foot on sailing boats.

Code	Colour	Roll
10.293.00	White	100 mm x 1,25 m
10.293.01	Black	100 mm x 1,25 m

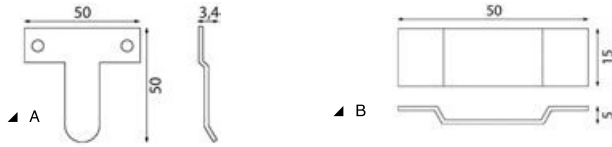
Pins, eyelets and mounting accessories



Cushion holder

Stainless steel. Part A has to be fastened to the boat and part B has to be fastened to the back of the cushion. Then the two parts stuck one into the other.

Code	mm
10.320.00	50x50 (A) 50x15 (B)



Snap fasteners made of stainless steel



Snap fasteners made of chromed brass

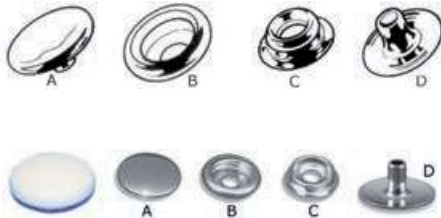


Code	Description
10.301.01	A series of 15 x 17-mm Ø pins, male and female 10.303.11/12/13, for fitting onto canopies, tents, etc. It includes installation tool.

Code	Description
10.301.02	A series of 10 light pins, male and female, designed for fitting into clothing, blinds, bags etc.; includes installation kit.

Snap fasteners

Bulk pack of 1000 pieces.



Code	Description	Head Ø mm	Component	Material	Spring	ORDER BY BOX
10.301.11	Female head	17	A+B	Nickel plated brass	Brass	1000
10.301.12	Male to fasten under deck	-	C	Nickel plated brass	Brass	1000
10.301.13	Counterflange to fasten C on fabric	-	D	Nickel plated brass	Brass	1000
10.303.11	Female head	17	A+B	S.S.	Brass	1000
10.303.12	Male to fasten under deck	-	C	S.S.	Brass	1000
10.303.13	Counterflange to fasten C on fabric	-	D	S.S.	Brass	1000
10.304.11	Female head	17	A+B	S.S. coated with white nylon	Brass	1000



Top Snapper tool

Device to open automatic pins without ripping off the fabric.

Code	Made of
10.299.75	SS and nylon

Pliers for snap fasteners 10.301.XX/10.303.XX



Code	Description
10.299.85	Supplied without punches.

Deck press for snap fasteners 10.301.XX/10.303.XX



Code	Description
10.299.80	Supplied without punches.

Punch set for snap fasteners 10.301.XX/10.303.XX



Code	Match to	
	press	pliers
10.299.90	10.299.80	10.299.85

CAF-COMPO universal composite screw studs

Matching any snap fastener on the market. It comes in different colours to perfectly match any point of installation. Built-in screw for fast installation.

Version:

A: suitable for any material, fiberglass, wood and other composites included.

B: developed for use in sandwich-constructions with min. 10-mm core thickness.

C: metric-thread version for tapping into aluminum or iron substrates (profiles, hulls, windscreens, etc.)



Code	Version	Stud	Thread	Colour	Quantity	Notes
10.501.11	A	Universal	Long	White	100	-
10.501.41	A	Universal	Long	Black	100	-
10.502.10	B	Universal	Short	White	10	(blister)
10.502.11	B	Universal	Short	White	100	-
10.503.31	C	Universal	Metric	Grey	100	-
10.503.41	C	Universal	Metric	Black	100	-

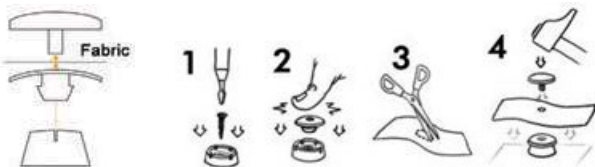


STAYPUT Press Clip plastic snap fasteners



Made of anti-UV corrosion-resistant nylon. Easy to install, guaranteed and resistant hold. 5-mm hole on the fabric. 18-mm Ø head.

Cap			Stud			Eyelet		
White	Black	ORDER BY BOX	White	Black	ORDER BY BOX	White	Black	ORDER BY BOX
10.313.01	10.313.51	100	10.313.02	10.313.52	100	10.313.03	10.313.53	100
10.314.01	10.314.51	1000	10.314.02	10.314.52	1000	10.314.03	10.314.53	1000



PERFIX



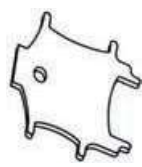
▲ 10.447.01



▲ 10.446.01



▲ 10.448.01



▲ 10.449.00

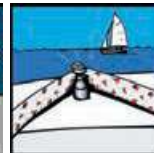
PERFIX snap fasteners

Suitable for mounting tents, hoods, cushions, etc. Made of **composite plastic**, the mounting part faces the deck, thus **there are no overhang parts that can be dangerous for the feet** or that can get caught up on the lines; anti-corrosion and UV resistant.

White	Blue	Description	ORDER BY BOX
10.446.01	10.446.02	Spring lock pin to install on cushion/sheet	100*
10.447.01	10.447.02	Female to install on deck	100**
10.448.01	10.448.02	Female with counterplate to install on fabric	100*
10.449.00	-	Installing harness	-

* Mounting key included

** 4.2x16 self-tapping screws included.



▲ PREVENT ACCIDENTS BY USING PERFIX FASTENERS

LOXX



▲ 10.440.00



▲ 10.440.02



▲ 10.440.01



▲ 10.442.10



▲ 10.441.00



▲ 10.444.10



▲ 10.443.00



▲ 10.439.00

LOXX® German snap fasteners

Fitted with **press-functioning** system and spring lock on the female.

Code	Description	Material	ORDER BY BOX
10.440.00	Female for oversized head hood, 15-mm Ø for better grip, for fabric up to 3 mm thick.	Stainless steel	50 -
10.440.50	Female for oversized head hood, 15-mm Ø for better grip, for fabric up to 3 mm thick.	Stainless steel	5 (blister)
10.440.02	Female for oversized head hood, 15-mm Ø for very thick fabric up to 7 mm.	Chromed brass	50 -
10.440.01	Female for hood, standard version, 11-mm Ø head, for fabric up to 3 mm thick.	Chromed brass	50 -
10.441.00	Male with self-tapping stainless steel screw. Length A: 12 mm.	Stainless steel	100 -
10.441.50	Male with self-tapping stainless steel screw. Length A: 12 mm.	Stainless steel	5 (blister)
10.442.10	Male with screw and nut, Length A: 10 mm.	Stainless steel	100 -
10.442.51	Male with screw and nut. Length A: 10 mm.	Stainless steel	5 (blister)
10.444.10	Male with knurled ring to be fastened on the fabric.	Stainless steel	100 -
10.444.51	Male with knurled ring to be fastened on the fabric.	Stainless steel	5 (blister)
10.443.00	Male with plate to be fastened with screws or rivets.	Chromed brass	100 -
10.443.50	Male with plate to be fastened with screws or rivets.	Chromed brass	5 (blister)
10.439.00	Special tool designed to screw Tenax and Loxx pins.	-	1 (single)



▲ 10.440.50



▲ 10.441.50



▲ 10.442.51



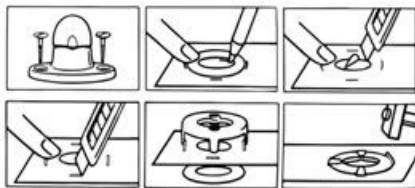
▲ 10.444.51



▲ 10.443.50



Turn buttons for canvas



The blister contains: 4 complete pieces.

Code	Material	mm
10.455.02	Stainless steel	33

Snap fasteners and male + female snap fasteners



Kit of nickel-plated brass fasteners in a display blister.

Code	Kit including
10.416.49	2 x 10.440.00 + 2 x 10.441.00 + tool for screwing

Q-SNAP fasteners

AISI 316

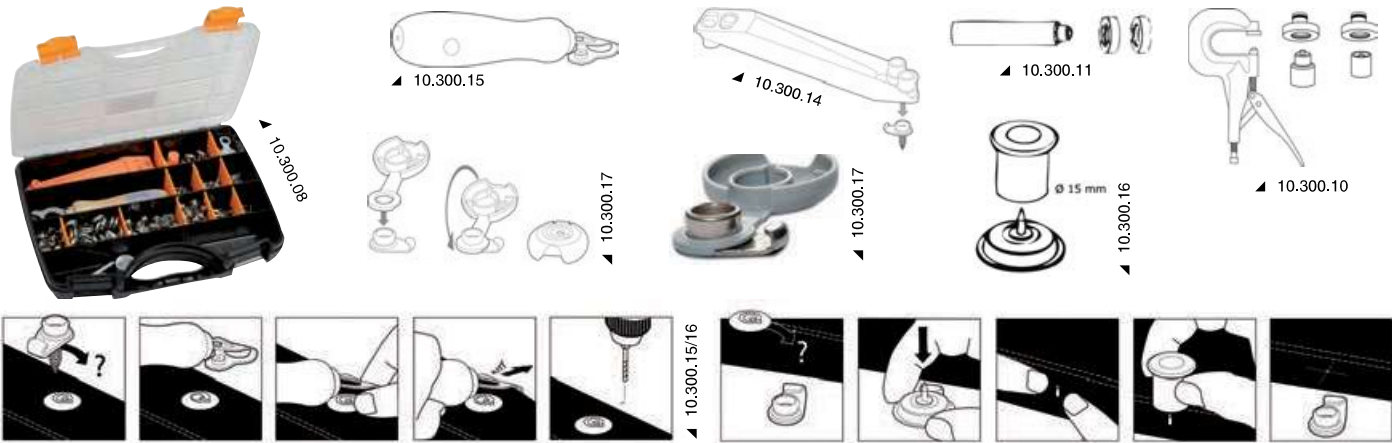
Made of AISI 316 stainless steel. The male part is equipped with a tooth to hook the female part which in turn has a special check lip. These two elements keep the fabric perfectly stretched and avoid its fortuitous release.

PATENT / BREVETTATO

Code	Product	ORDER BY BOX
10.300.01	Q-CAP (A), 4.4-mm pin	100
10.300.02	Q-CAP (A), 6.2-mm pin	100
10.300.03	Q-SOCKET (B)	100
10.300.04	Q-STUD (C)	100
10.300.06	KIT A (4.4 mm)+B+C+screws	1 kit = 10+10+10+screws
10.300.08	STARTER KIT	50 x 10.300.01 + 50 x 10.300.03 + 50 x 10.300.04 with 3 types of screws + 5 x SS rivets + 1 x 10.300.14 + 1 x 10.300.15 + 5 x 10.300.16 + 5 x 10.300.17 + 1 x 10.300.11

ACCESSORIES TO COMPLETE

- 10.300.10 Industrial press for mounting A+B
- 10.300.11 DIY kit for mounting A+B
- 10.300.14 Tool for correct orientation and fixing of C
- 10.300.15 Tool for correct positioning of C on the hull, when A+B are already mounted on the tent
- 10.300.16 Pin for correct positioning of A+B on the cloth when C is already mounted on the hull
- 10.300.17 Plastic cap for C



Eyelets made of brass

Display blister pack with installation kit.

Code	Size mm	Color	ORDER BY BOX
10.372.05	5,5	nickel plated	40
10.372.08	8,5	nickel plated	24
10.372.11	11	nickel plated	15
10.372.15	14	yellow	10



Fasteners made of nickel-plated brass for carpet

Code	Description	ORDER BY BOX
10.305.00	Female + male to be seamed on the carpet	100
10.306.00	Male with S.S. self-tapping screws, length 10 mm, to be screwed on the floor	100



10.305.00



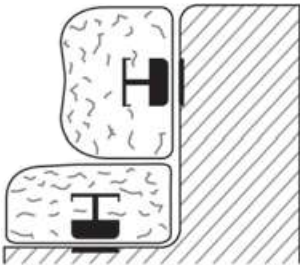
10.306.00

Canopy knob

100% nylon. Press-fit the eyelet onto the fabric part. Nylon knob spring, white colour.

Code	Description	ORDER BY BOX
10.426.00	Male to be fixed + eyelet for fabric	10





New

Magnetic and invisible anchoring system for Cushions FOAM ANCHOR®

FOAM ANCHOR® is an intuitive and flexible anchoring system, its installation is very simple and makes any foam cushion magnetic.

The FOAM ANCHOR® system consists of a powerful magnetic attachment designed to be inserted/embedded inside the foam layer of nautical cushions.

Once the magnet has been inserted into the foam, the cushion can be attached to any surface that attracts the magnet (FOAM ANCHOR® plates, another cushion with FOAM ANCHOR® or metal bars).

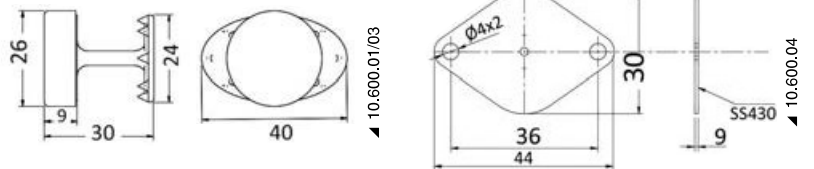
The magnetic stainless steel plate that comes with the kit includes a 3M double-sided adhesive disc; in case of need for screw fixing, the plate is equipped with two 4 mm side holes.

FOAM ANCHOR® can be used to fix cushions to fixed surfaces such as benches or backrests (10.600.02), but it is also the ideal solution for hooking cushions together (10.600.01), preventing them from moving when you are sitting or lying.

The number of magnets to be installed can be chosen based on the desired degree of resistance.

Example Diagram	
Boat area	Recommended anchoring system q.ty
Inside	2
Cockpit	4
Bow	6

Code	Description	Use type
10.600.01	2 magnetic anchors (positive/negative)	Connect 2 cushions together
10.600.02	1 magnetic anchor plus adhesive magnetic anchor stainless steel plate or for 4 mm screws	For attaching the cushion to bulkhead/bench/deck
10.600.03	1 magnetic anchor	-
10.600.04	Adhesive magnetic anchor stainless steel plate or for 4 mm screws	-



DELAHOUSSE Quick Fit panel fastening system

Hidden and easy fastening, no special tools required.

For panels made of wood, metal, resin, etc.

With or without seals.

Material: PA6 (black nylon).



▲ 10.340.04 Standard installation

Code		Description	Opening load kg with:			ORDER BY BOX
Male	Female		10.341.01	10.341.02	10.341.03	
10.340.01	-	Short thread with standard ball pin	6.5	5.8	5.8	100
10.340.02	-	Short/short thread with standard ball pin	6.5	5.8	5.8	100
10.340.03	-	Short thread with long ball pin	7.0	5.6	5.6	100
10.340.04	-	Short/short thread with long ball pin	7.0	5.6	5.6	100
-	10.341.01*	Standard model with 20-mm bore and 2.5-mm hear overhang	-	-	-	100
-	10.341.02*	Self-aligning model with 25-mm bore and 2.5-mm hear overhang	-	-	-	100
-	10.341.03	Square self-aligning model with 25-mm bore and 2.7-mm hear overhang	-	-	-	100

* For flush mounting, drill a 2.5-mm deep bore on the 25/32-mm panel

10.342.00 Marking Pin to be used at the rear of the panel for mounting without measuring.

