

07



Turnbuckles and rigging screws



BLUE WAVE rigging screws

AISI 316

BRONZE BODY

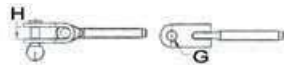
Fitted with **chromed brass** bottle-screws and **AISI stainless steel** terminals, to be arranged according to needs.

Fitted as: 1 bottle-screw, 1 left screw thread or 1 right screw thread (to be selected among these two types)

Bronze body (A)	Left thread jointed fork (B)	Right thread		UNF thread	For cable Ø mm	Breaking load kg	A+B+C		A+B+D		F mm	H mm	G mm
		press-fitting terminal (C)	fixed fork (D)				L1 mm	L2 mm	L1 mm	L2 mm			
07.203.01	07.204.01	07.205.01	07.206.01	1/4"	3	1300	255	193	225	163	9,5	8	6,3
07.203.02	07.204.02	07.205.02	07.206.02	5/16"	4	2350	304-310	228-234	268	192	11	10	8
-	-	07.205.03	-	5/16"	5	2350	304-310	228-234	268	192	11	10	8
07.203.03	07.204.03	07.205.04	07.206.03	3/8"	5	3500	349-364	265-280	313	229	12	12	9,5
-	-	07.205.05	-	3/8"	6	3500	349-364	265-280	313	229	12	12	9,5
07.203.04	07.204.04	07.205.06	07.206.04	7/16"	6	4700	397-408	307-318	350	260	12	15	11
-	-	07.205.07	-	7/16"	7	4700	397-408	307-318	350	260	12	15	11
07.203.05	07.204.05	07.205.08	07.206.05	1/2"	7	5400	438-453	332-347	387	281	14	18	12,7
-	-	07.205.09	-	1/2"	8	5400	438-453	332-347	387	281	14	18	12,7
07.203.06	07.204.06	07.205.10	07.206.06	5/8"	8	8000	536-553	404-421	491	359	18	20	16
-	-	07.205.11	-	5/8"	10	8000	536-553	404-421	491	359	18	20	16
07.203.07	07.204.07	07.205.12	07.206.07	3/4"	10	13000	625-655	465-495	586	426	24	24	19
-	-	07.205.13	-	3/4"	12	13000	625-655	465-495	586	426	24	24	19



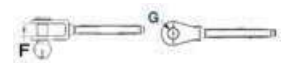
▲ A (07.203.xx)



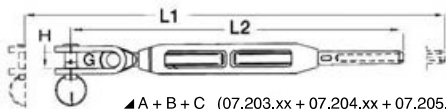
▲ B (07.204.xx)



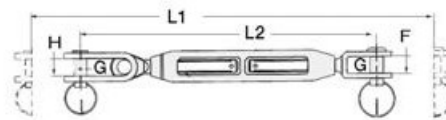
▲ C (07.205.xx)



▲ D (07.206.xx)



▲ A + B + C (07.203.xx + 07.204.xx + 07.205.xx)



▲ A + B + D (07.203.xx + 07.204.xx + 07.206.xx)



Stainless steel turnbuckle

AISI 316

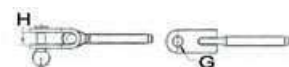
UNF threads. Order the A+B+C or A+B+D combination.

How to make it: 1 x bottle + 1 x left thread + 1 x right thread (choice of 2 types)

Open bottle (A)	Left thread jointed fork (B)	Right thread		UNF thread	For cable mm	A+B+C		A+B+D		F mm	H mm	G mm
		press-fitting terminal (C)	fixed fork (D)			L1 mm	L2 mm	L1 mm	L2 mm			
07.183.01	07.184.01	07.185.01	07.186.01	1/4"	3	255	193	225	163	9,5	8	6
07.183.02	07.184.02	07.185.02	07.186.02	5/16"	4	304-310	226-234	268	192	11	10	8
-	-	07.185.03	-	5/16"	5	304-310	226-234	268	192	11	10	8
07.183.04	07.184.04	07.185.04	07.186.04	3/8"	5	349-364	265-280	313	229	12	12	9
-	-	07.185.05	-	3/8"	6	349-364	265-280	313	229	12	12	9
07.183.06	07.184.06	07.185.06	07.186.06	1/2"	7	438-453	332-347	387	281	14	18	12
-	-	07.185.07	-	1/2"	8	438-453	332-347	387	281	14	18	12
07.183.08	07.184.08	07.185.08	07.186.08	5/8"	8	536-553	404-421	491	359	18	20	16
-	-	07.185.09	-	5/8"	10	536-553	404-421	491	359	18	20	16



▲ A (07.183.xx)



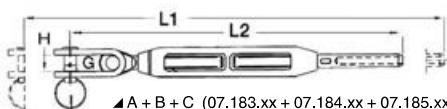
▲ B (07.184.xx)



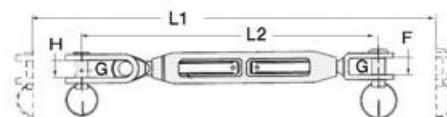
▲ C (07.185.xx)



▲ D (07.186.xx)



▲ A + B + C (07.183.xx + 07.184.xx + 07.185.xx)

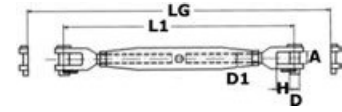


▲ A + B + D (07.183.xx + 07.184.xx + 07.186.xx)

Turned rigging screws

Made of mirror polished **AISI 316 stainless steel**; fine finish, sliding threads, generously sized to provide a strong adjusting travel.

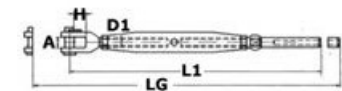
Code	Thread D1 MA	L1 mm	A mm	D mm	H mm	LG mm	Breaking load kg
07.192.04	4	115	4,5	4	8	175	410
07.192.05	5	127	5,5	5	10	195	460
07.192.06	6	150	6	6	10	230	910
07.192.08	8	180	8	8	11	255	1330
07.192.10	10	220	10,2	9	14	300	2180
07.192.12	12	270	14	12	20	380	3200
07.192.14	14	290	13	12	20	328	4300
07.192.16	16	340	17	12	26	480	5310
07.192.20	20	340	20	19	29	387	7940



Turned rigging screws with press-fitting terminal for stainless steel cables

Made with mirror polished **AISI 316 stainless steel**; fine finish, sliding threads, generously sized to provide a strong adjusting travel.

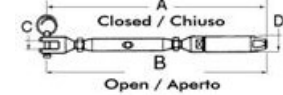
Code	Thread D1 MA	Rope Ø mm	L1 mm	A mm	H mm	LG mm
07.194.06	6	3	180	6	10	250
07.194.08	8	4	210	8	11	285
07.194.10	10	5	240	10,2	14	330
07.194.12	12	6	300	14	20	410



Rigging screws with built-in stainless steel allen spanner terminals

Made of **AISI 316 stainless steel**, suitable for **lifeline ends**.

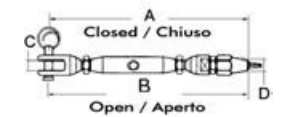
Code	for bare cables mm	Plastified wires mm	A mm	B mm	C mm	D mm
07.190.06	5/6	6	170	240	6,2	12



Turned rigging screws with built-in terminal suitable for Parafil cables

Made of **AISI 316 stainless steel**.

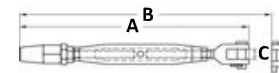
Code	Line Ø mm	A mm	B mm	C mm	D mm
07.196.07	7	187	240	6	13
07.196.09	9	190	240	6	14



Rigging screws with self-locking terminal

Made of **AISI316 stainless steel**. The inner cone **automatically blocks** the cable when inserting it.

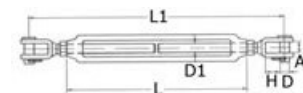
Code	Thread D1 MA	Line Ø mm	A mm	B mm	C mm
07.385.06	6	3	175	245	7,5
07.385.08	8	4	200	285	11
07.385.10	10	5	245	335	12
07.385.12	12	6	290	405	14



Rigging screws with two fixed jaws

AISI 316 stainless steel.

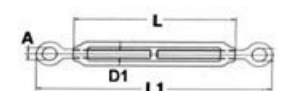
Code	Thread D1 MA	L1 mm	L mm	A mm	H mm	D mm	Breaking load kg
07.198.05	5	120	70	6,5	10	5	400
07.198.06	6	140	90	7,5	10	6	600
07.198.08	8	180	120	11	11	8	1000
07.198.10	9	220	150	12	14	9	1400
07.198.12	12	300	200	14	20	12	2400



Eye to Eye Rigging screws

316 Stainless Steel.

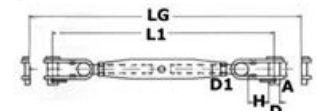
Code	Thread D1 MA	L mm	L1 mm	A mm	Work load kg
07.193.04	4	60	100	7	-
07.193.05	5	70	120	8	160
07.193.06	6	90	150	10	320
07.193.08	8	120	200	14	560
07.193.10	10	150	240	16	880

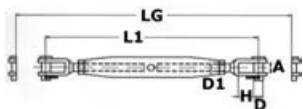


Turnbuckle with two articulated jaws

AISI 316 stainless steel.

Code	Thread D1 MA	L1 mm	A mm	D mm	H mm	LG mm	Working load kg
07.195.06	6	160	7	6	15	230	600
07.195.08	8	190	10	8	20	265	1000
07.195.10	10	230	12	9	25	320	1400
07.195.12	12	280	13	12	30	390	2400

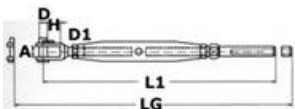




Rigging screws with two fixed jaws

AISI 316 stainless steel.

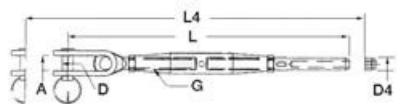
Code	Thread D1 MA	L1 mm	A mm	H mm	LG mm	D mm	Breaking load kgF
07.197.04	4	110	5,5	8	160	4	346,5
07.197.05	5	130	6,5	10	190	5	571
07.197.06	6	150	7,5	10	220	6	785
07.197.08	8	165	11	11	240	8	1417
07.197.10	10	190	12	14	280	9	2223
07.197.12	12	245	14	20	360	12	3263
07.197.14	14	270	15	22	390	12	4445
07.197.16	16	310	17	26	450	16	9075



Rigging screws with fixed jaw and press-fitting terminal

AISI316 stainless steel.

Code	D1	Cable Ø mm	L1 mm	A mm	D mm	H mm	LG mm	Working load kg
07.191.06	M6	3	175	7,5	6	10	245	250
07.191.08	M8	4	200	11	8	11	275	350
07.191.10	M10	5	230	12	9	14	320	550
07.191.12	M12	6	285	14	12	20	400	-



Rigging screws with articulated jaw and press-fitting terminal

made of AISI 316 stainless steel

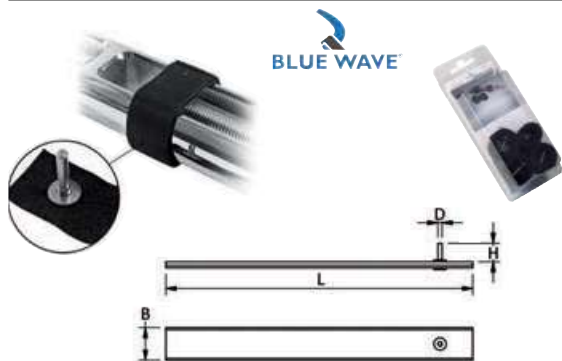
Code	For cable Ø mm	G mm	L mm	L4 mm	D4 mm	D mm	A mm	Work load kg
07.202.06	3	6	180	257	6,35	6	7	238
07.202.08	4	8	212	297	7,5	8	10	450
07.202.10	5	10	246	361	9	9	12	625
07.202.12	6	12	292	-	12,5	12	13	925



Rigging screw protectors made of UV-resistant white polyester

Very sturdy, fitted with **hook&loop fastener**, fine and convenient design providing protection for sails and the legs of the crew.

Code	Ø mm	Length mm
07.596.01	30	400
07.596.02	40	500
07.596.03	50	600



BLUE WAVE

New Smart Pins tightening system for turnbuckles

Fast and innovative system, an option to the traditional split pins. Made up of an AISI316 stainless steel pin and a Velcro strap for a safe use of the rigging terminals. Slip the pin into the terminal hole and tighten the Velcro strap around the bottle screw. **4-pc package.**

Code	Thread size		D mm	H mm	B mm	L mm
	mm	G				
07.597.00	M6	1/4"	2	8	16	100
07.597.01	M8 - M10	5/16" - 3/8"	2,5	10	16	130
07.597.02	M12	7/16" - 1/2"	3,2	13	20	180
07.597.03	M16 - M20	5/8" - 3/4"	4	20	20	220

OSCULATI



▲ 07.595.64/65



Cover trims for shrouds and rigging screws, made of anodized aluminium

Shaped by two halves with dovetail joint. **Black nylon** terminal caps. This system **prevents having to mount the shroud** in order to run the trim. Customizable cutting; the caps are fitted with a special pin that is also used to hold the shroud. The pipe is perforated by making a customizable cut.

Cap	Profile	Ø mm	Maximum wire mm	Length m
07.595.64	07.595.40	40	7	2
07.595.65	07.595.60	60	12	2