



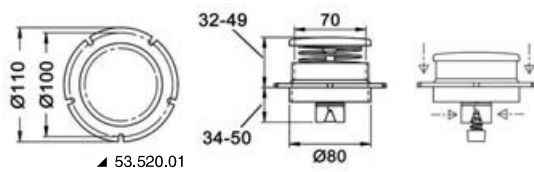
Wind Shell modular Venting System

Wind Shell Venting system

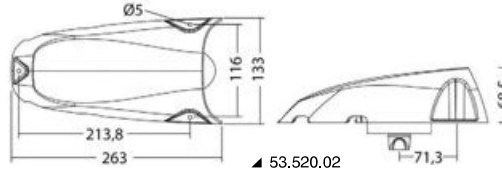
UV-resistant ABS body. Push the central button to open and close. Perfectly watertight when closed. Can be installed with shell cover to maximise airflow/protection



▲ 53.520.01



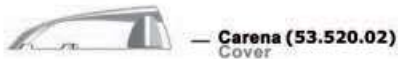
▲ 53.520.01



▲ 53.520.02



▲ 53.520.02



— Carena (53.520.02)
Cover

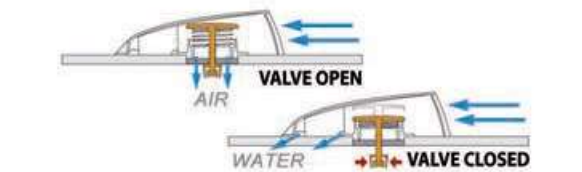


— Valvola apertura / chiusura (53.520.01)
Open / Close valve



— Manicotto est. Ø86 - Int. Ø81,2 (53.520.03)
Coupling ext. Ø86 - Int. Ø81,2

— Collarino per manicotto
Ring for coupling



WATER + VALVE CLOSED



AIR IN AIR OUT
Può essere usato per far entrare o estrarre l'aria.
Can be used for air intake or outtake

Mushroom vents, hatch vents and louvred vents



Cowl vents

Made of white flexible PVC, swivelling, fitted with locking cap.

Code	Profile type	neck mm	Height mm	Width mm	Base Ø mm
53.135.93	depressed	70	90	160	112
53.135.94	depressed	100	150	185	142
53.135.95	traditional	70	230	110	112
53.135.96	traditional	100	250	140	142

DELUXE stainless steel cowl vent

AISI 316 Made of mirror polished AISI 316 stainless steel, fitted with screw locking cap.

Code	Deck hole mm	Height mm
53.134.09	102	136



Ventilator

Made of **stainless steel**, lets air pass through without letting water in, fitted with underlying electric starter for cabin ventilation, powered with solar cell built-in onto the ventilator.

Code	Ø mm	Size mm	Housing hole mm
53.503.00	200	30	103



Watertight vents - ventilite/ventair

Made of **stainless steel**. It lets air in while being completely watertight.

Code	Model	Outer Ø mm	Height mm	Housing hole mm
53.500.10	With light passage	230	35	97



LEWMAR ventilator

Made of reinforced plastic, it exchanges air and prevents water seepage. It can be mounted onto the hatch glass or on the deck, Universal model complying with the CE ISO 12216:2003 standards.

Code	Outer Ø mm	Recess bore mm
19.041.01	170	76

LEWMAR®

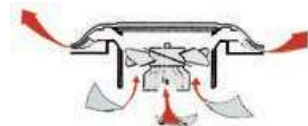
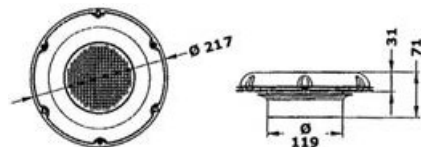


Solarvent automatic solar vent

The latest venting system using solar power. Fitted with **mirror polished stainless steel** vent diffuser. ON-OFF switch. Equipped with NIMH rechargeable batteries which store energy during the day, **ensuring 30 hours of operation without solar light.**

Equipped with 2 RIGHT/LEFT fans to let **air in or out.**

Code	Cap Ø mm	Practice hole mm	External/internal overhang mm	Air circulation m ³ /hour
53.636.00	217	119	71 total	20

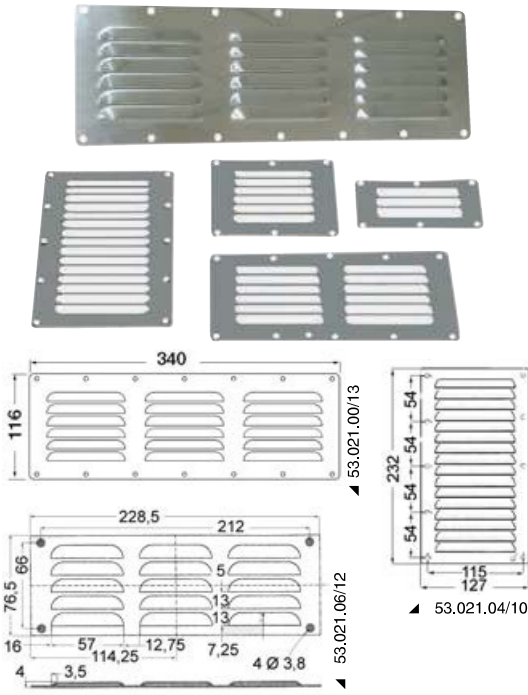


Shell Vent

Made of **chromed brass**, innovative and elegant design.

Code	mm	Type
53.310.01	165x120x34	American
53.313.00	175x115x40	-

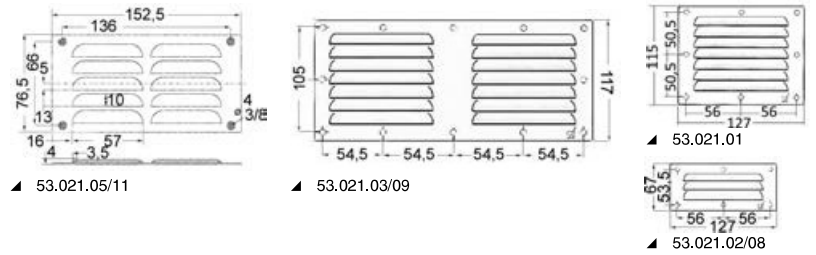




Rectangular Louvred Vents

Made of polished stainless steel.

Code	Height mm	Width mm	Fly screen
53.021.01	115	127	no
53.021.02	67	127	no
53.021.03	118	232	no
53.021.04	232	127	no
53.021.05	76	152	no
53.021.06	76	229	no
53.021.00	116	340	no
53.021.07	115	127	yes
53.021.08	67	127	yes
53.021.09	118	232	yes
53.021.10	232	127	yes
53.021.11	76	152	yes
53.021.12	76	229	yes
53.021.13	116	340	yes



Oval louvred vents



Made of polished stainless steel.

Code	mm
53.022.01	116x128

Oval air inlets



Made of mirror polished stainless steel.

Code	mm
53.216.92	170 x 60

Circular air inlet



Made of mirror polished stainless steel.

Code	Ø mm
53.216.90	83



Dual louvre

Made of polished stainless steel.

Code	mm
53.022.02	235x118



Air vent, shutter type, fitted with sash locking system

Made of polished stainless steel.

Code	mm	fly screen
53.468.00	152x76	no
53.468.01	152x76	yes
53.468.02	229x76	no
53.468.03	229x76	yes

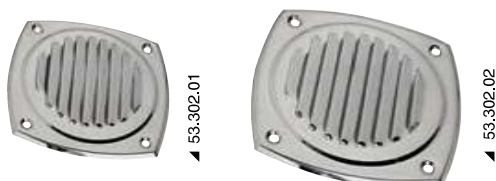


53.301.85/86/87

Circular Louvred Vents

Made of polished stainless steel.

Ø mm	With fly screen	Without fly screen	Splash-proof protection
102	53.301.67	53.301.71	53.301.85
125	53.301.68	53.301.72	53.301.86
152	53.301.69	53.301.73	53.301.87
178	53.301.64	53.301.63	-
63	53.301.66	53.301.70	-



53.302.01

53.302.02

Stainless steel louvre vents

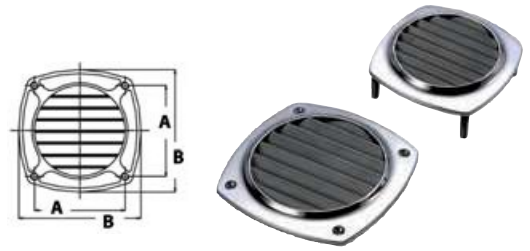
Mirror-polished printed stainless steel plate

Code	mm
53.302.01	100x100
53.302.02	125x125

Stainless steel air vent

AlSi316 mirror-polished precision-cast stainless steel.

Code	B mm	Version	Centre distance (A) mm	Bore Ø mm
53.301.80	97x97	With screws	64	75
53.301.81	97x97	With studs	64	75
53.301.82	129x129	With screws	92	100
53.301.83	129x129	With studs	92	100



ABS Hose vent with collar

Made of ABS

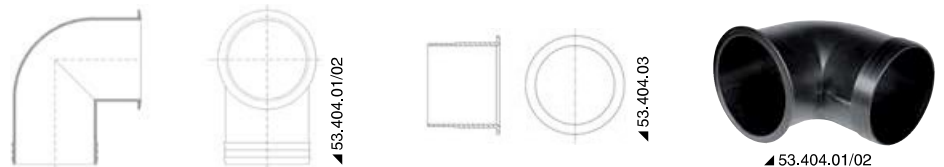
Code	mm					Type	Color	For hose of items
	A	B	C	Ø Neck D	H			
53.273.01	92	92	62	76	-	straight	White	16.104.35
53.273.02	92	92	62	76	-	straight	Black	16.104.35
53.273.03	126	126	76	102	-	straight	White	16.104.36
53.273.04	126	126	76	102	-	straight	Black	16.104.36
53.274.01	92	92	108	76	32	90°	White	16.104.35
53.274.02	92	92	108	76	32	90°	Black	16.104.35



Pivoting hose-vent connectors for stainless steel vents

Made of plastic.

Code	Reference vent	Type	Neck Ø mm	Hose Ø mm	Adaptable hose
53.404.01	53.301.80; 53.301.81; 53.302.01	90°	76	80	16.104.35
53.404.02	53.301.82; 53.301.83; 53.302.02	90°	102	102	16.104.36
53.404.03	53.301.80; 53.301.81; 53.302.01	straight	-	80	16.104.35



Butterfly vents

Made of polished stainless steel, fitted with rotating locking system.

Code	Ø mm	fly screen
53.214.45	102	no
53.214.46	102	yes
53.214.55	127	no
53.214.56	127	yes
53.214.65	152	no
53.214.66	152	yes



Inlet/outlet air grid

Made of stainless steel, fitted with screen.

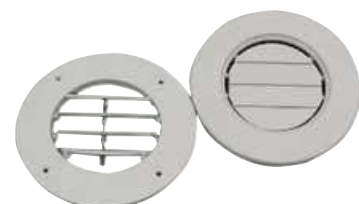
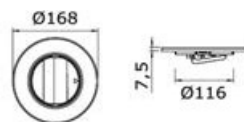
Code	Neck Ø mm
53.301.74	58



Air grid

Fitted with adjustable and closing white ABS fins, covering ring for the screws.

Code	External Ø mm	Hole Ø mm	Neck Ø mm	Version
53.301.75	163	115	-	rear flush mount





Concentric air diffusers

Made of **white ABS**, designed for air distribution.

Code	Ø mm	Hole Ø mm	Mounting
53.301.78	165	125	with 3 screws
53.301.79	165	125	with spring clips



ABS louvred vents

Made of **ABS plastic**.

Code	mm	Colour
53.273.25	85x85	Chromed
53.273.26	85x85	Black
53.273.27	85x85	White
53.273.28	85x85	Cream
53.273.29	85x85	Grey
53.480.82	125x125	Black
53.480.84	125x125	White



Collars

Made of **ABS with two diameters**; used to connect fan hose to the bulkhead

Code	Ø mm	For hoses	Mounting holes
53.273.24	70/80	similar to our model 16,104,30/35	Corresponding to grid models 53,273,26; 53,273,27; 53,301,80



Nylon louver

Made of **nylon**.

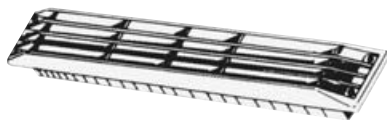
Code	mm	Colour
53.301.05	125x260	Black
53.301.06	125x260	White



ABS louver

Made of **ABS plastic**.

Code	mm	Color
53.273.90	201x101	black
53.273.91	201x101	white



"Zebra" Louvred vents

Made of **ABS plastic**.

Code	mm	Recess mm	Colour
53.458.01	435x64	405x48	black
53.458.02	435x64	405x48	white



Rear container

To connect hose to the fan. Made of **ABS plastic**.

Code	To be used with	Depth mm
53.451.00	53.458.01; 53.458.02	115



ABS air inlet for engine room

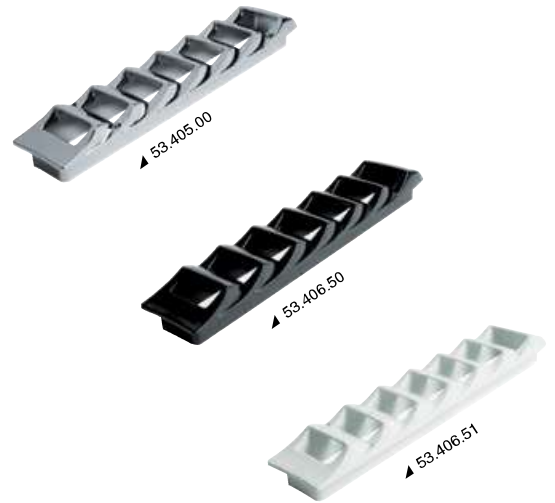
Code	External mm
53.408.00	420x120

ABS side vent

Made of **chromed ABS**; fitted with a very low streamlined profile.

Code	mm	recess fit mm	Color	Ventilation box*
53.405.00	415x83	395x58	chromed	53.407.00
53.406.50	415x83	395x58	black	53.407.00
53.406.51	415x83	395x58	white	53.407.00

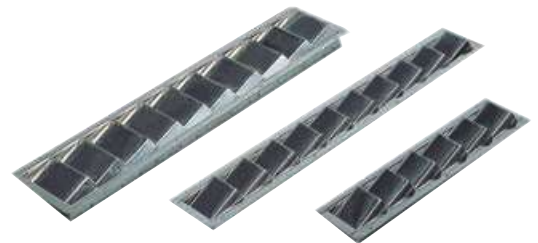
* Made of **ABS**, designed to connect into louvred vents models 53.405.00; 53.406.50; 53.406.51, two ventilation hose model 16.104.30; 16.104.35, size 294x60 mm; for recess fit onto the other air intakes mentioned above.



Stainless steel side louver

Made of mirror-polished **stainless steel**.

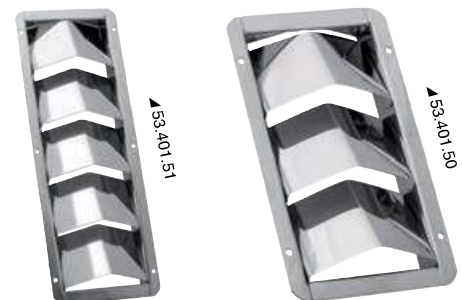
Code	mm	recess fit mm
53.204.01	525x112	27
53.205.01	325x76	27
53.206.01	525x76	27



Large capacity Louvred vents

Made of **stainless steel**, genuine Japanese product, designed for engine bays.

Code	mm
53.401.50	205x114
53.401.51	326x114



Containers

Made of **stainless steel**, suitable for piping air on the base of inboard motors using flexible pipes; designed to be coupled with Louvred vent models 53.401.50/51.

Code	Model	To be combined with air vents
53.402.01	For one 75-mm Ø tube item 16.104.30; 16.104.35	53.401.50
53.402.02	For two 75-mm Ø tubes item 16.104.30; 16.104.35	53.401.51



Rear channelling containers

Made of **black ABS** plastic, suited for air vents.

Code	Version	Ø mm	Suitable	For pipe
53.403.02	right	75	53.401.51	16.104.30; 16.104.35
53.403.03	left	75	53.401.51	16.104.30; 16.104.35

